



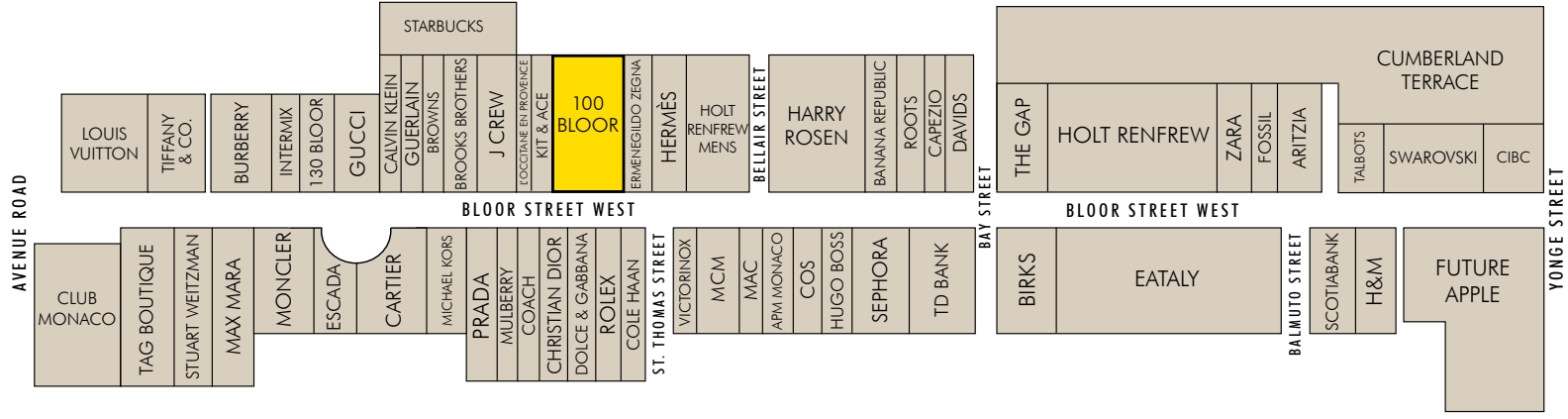
100
Bloor Street West

the shops at
One Hundred Bloor

*Luxury Brands at the shops of 100 Bloor include
Hermes, Holt Renfrew Men and Ermenegildo Zegna*

- ▶ An iconic retail address, located on the superior north side of Bloor Street West next to Hermès, Ermenegildo Zegna and Holt Renfrew Men's
- ▶ Triple height façade, with over 100 feet of frontage offering retailers unparalleled brand exposure.
- ▶ Retailer sales performance in 2017 averaged over \$2,500 PSF in this section of Bloor Street West.





- TIFFANY & Co
- PRADA
- DAVIDS
- GUERLAIN
- HR MEN
- LOUIS VUITTON
- GUCCI
- MONCLER
- Cartier Paris
- BOSS HUGO BOSS
- Brooks Brothers
- HOLT RENFREW
- BURBERRY
- MONT BLANC
- HARRY ROSEN
- ROLEX
- COS
- D&G DOLCE & GABBANA
- FOUR SEASONS HOTEL Toronto

Bloor Street West 100

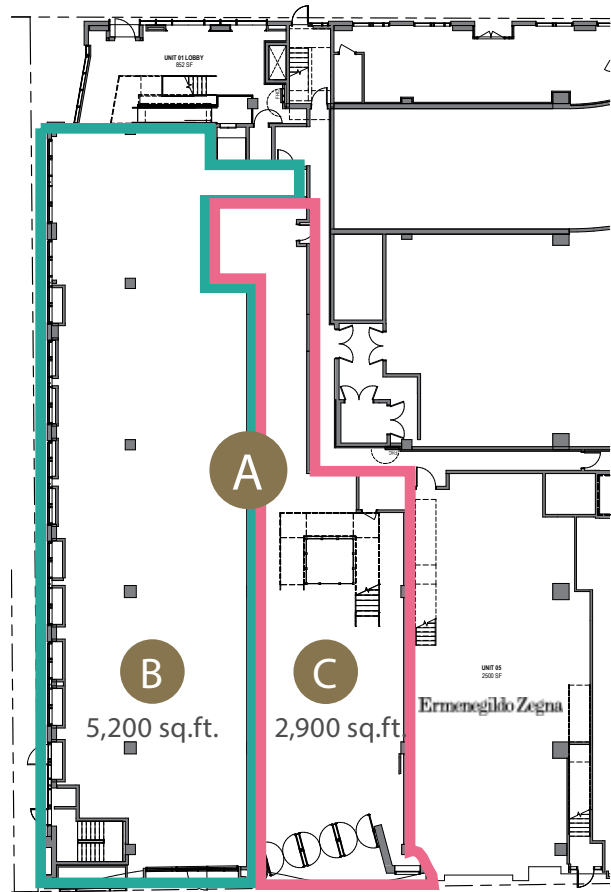
RETAIL



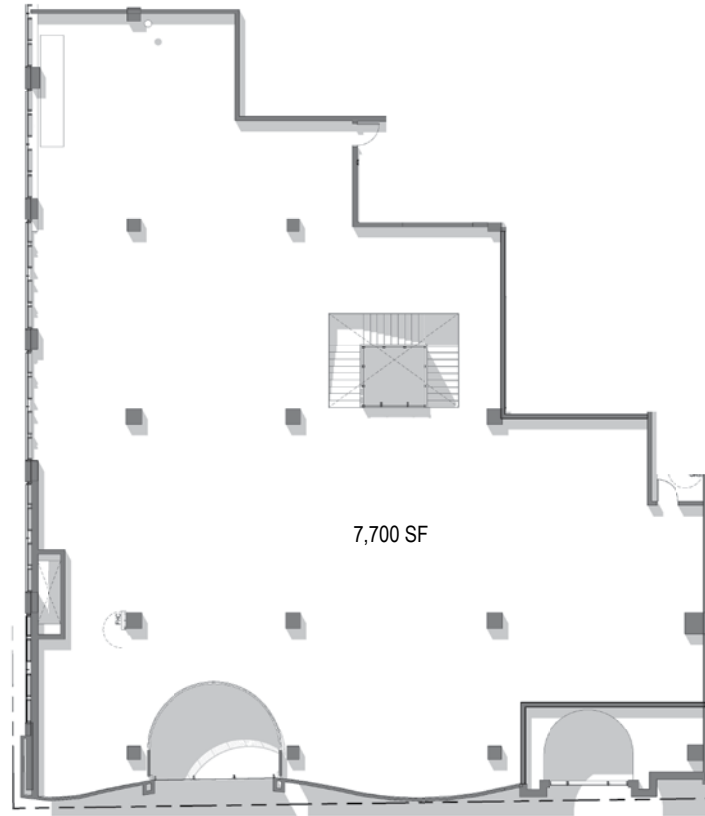
DEMISING OPTIONS

Bloor Street West 100

RETAIL



Ground Floor | 8,100 sq. ft.



Second Floor | 7,700 sq. ft.

19.7 ft ceilings
Towering Triple Height Façade

A

(Entire GF Space)
8,100 sq. ft.
73 ft. Frontage

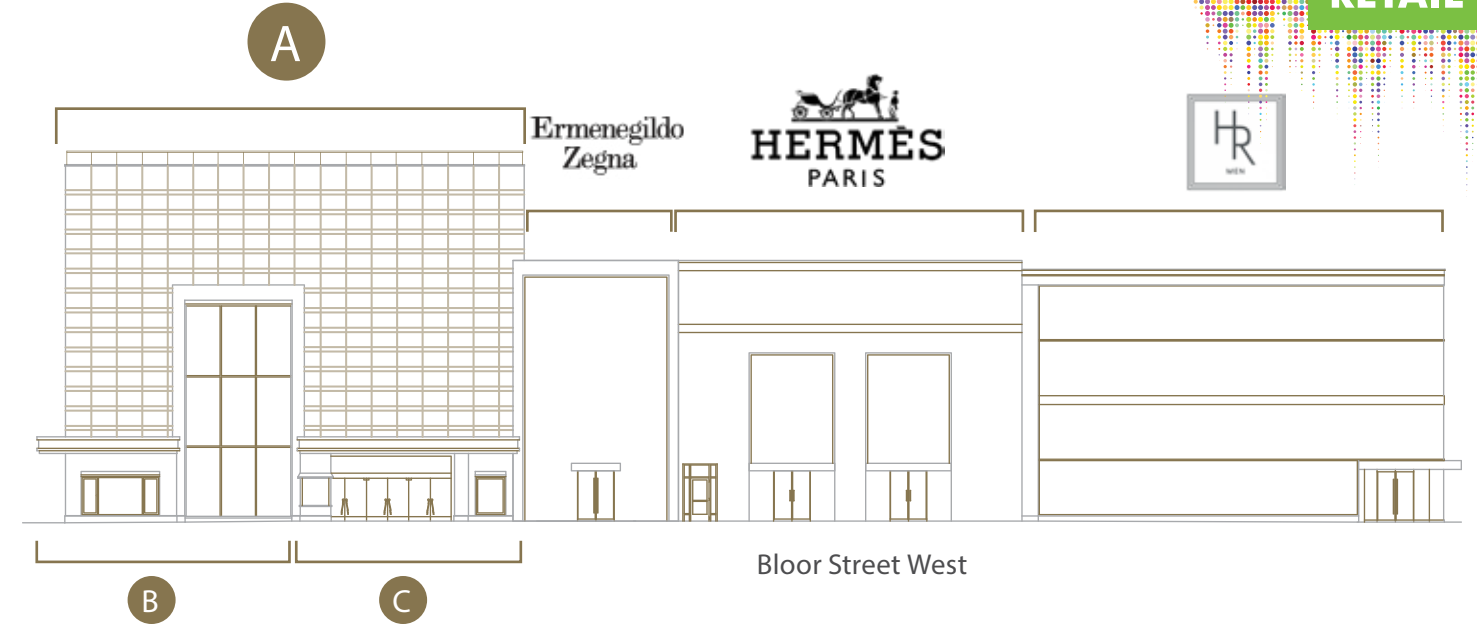
B

5,200 sq. ft.
38 ft. Frontage

C

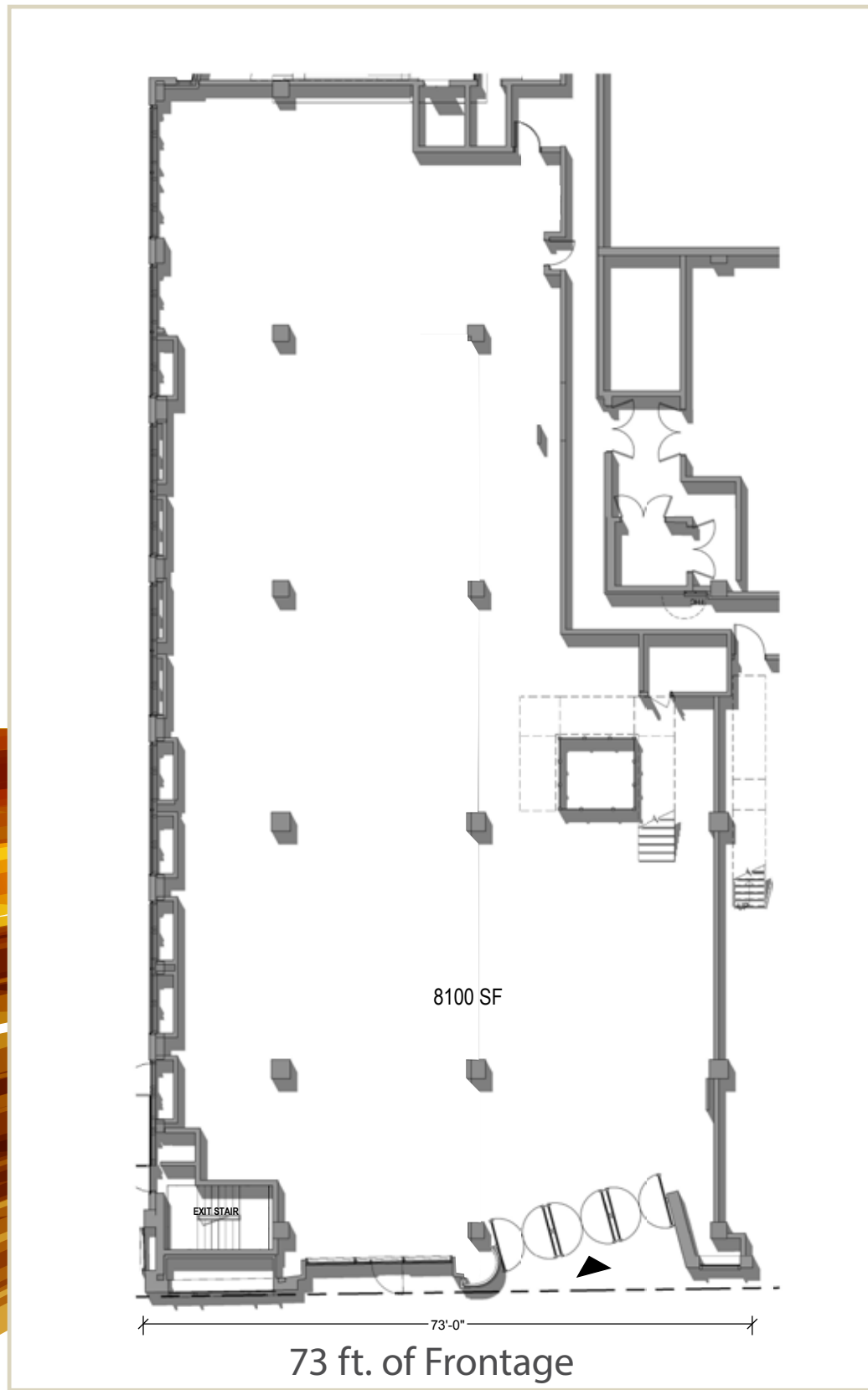
2,900 sq. ft.
35 ft. Frontage

+ up to 7,700 sq. ft. on the 2nd Floor available

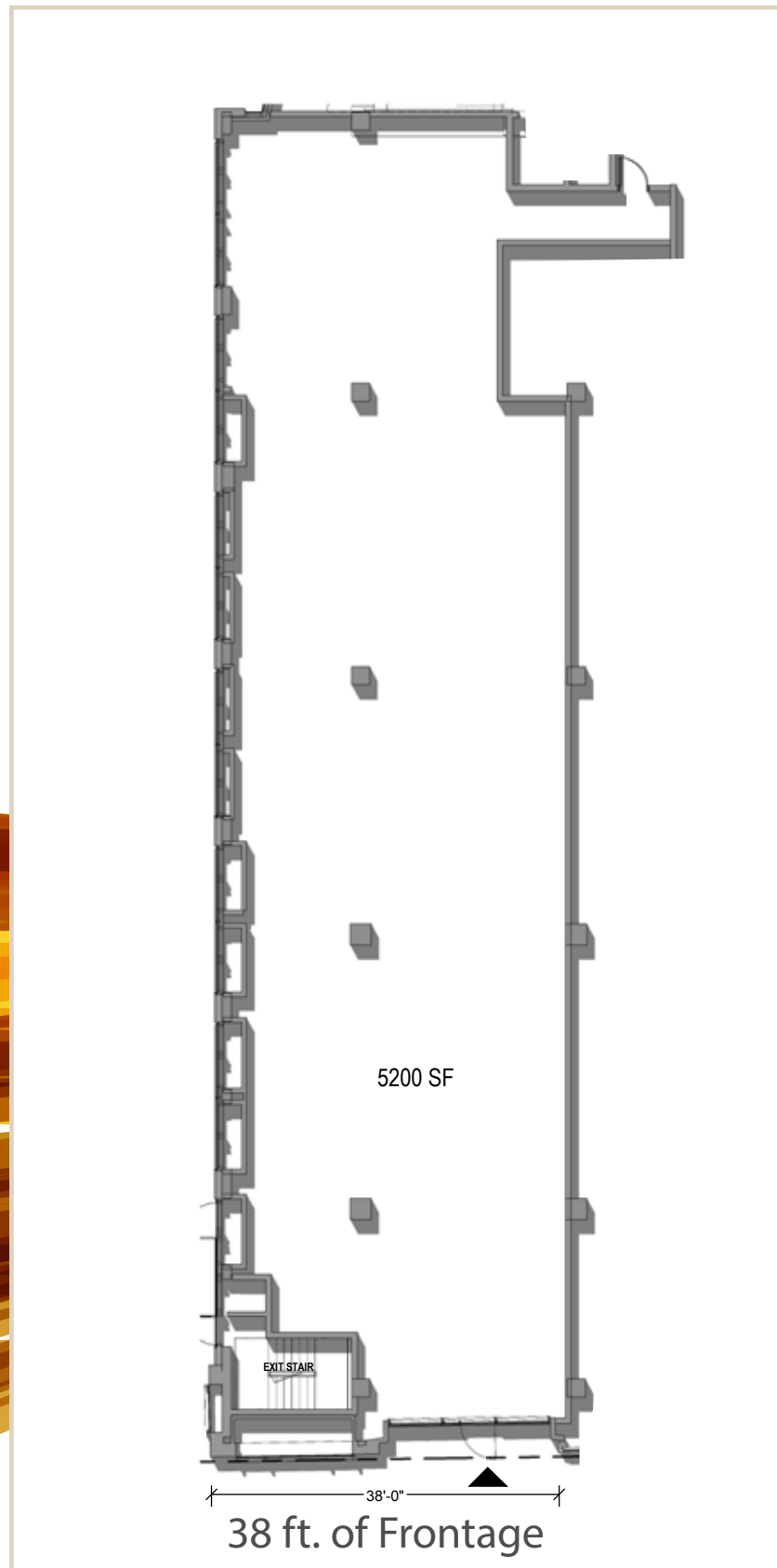


Bloor Street West 100

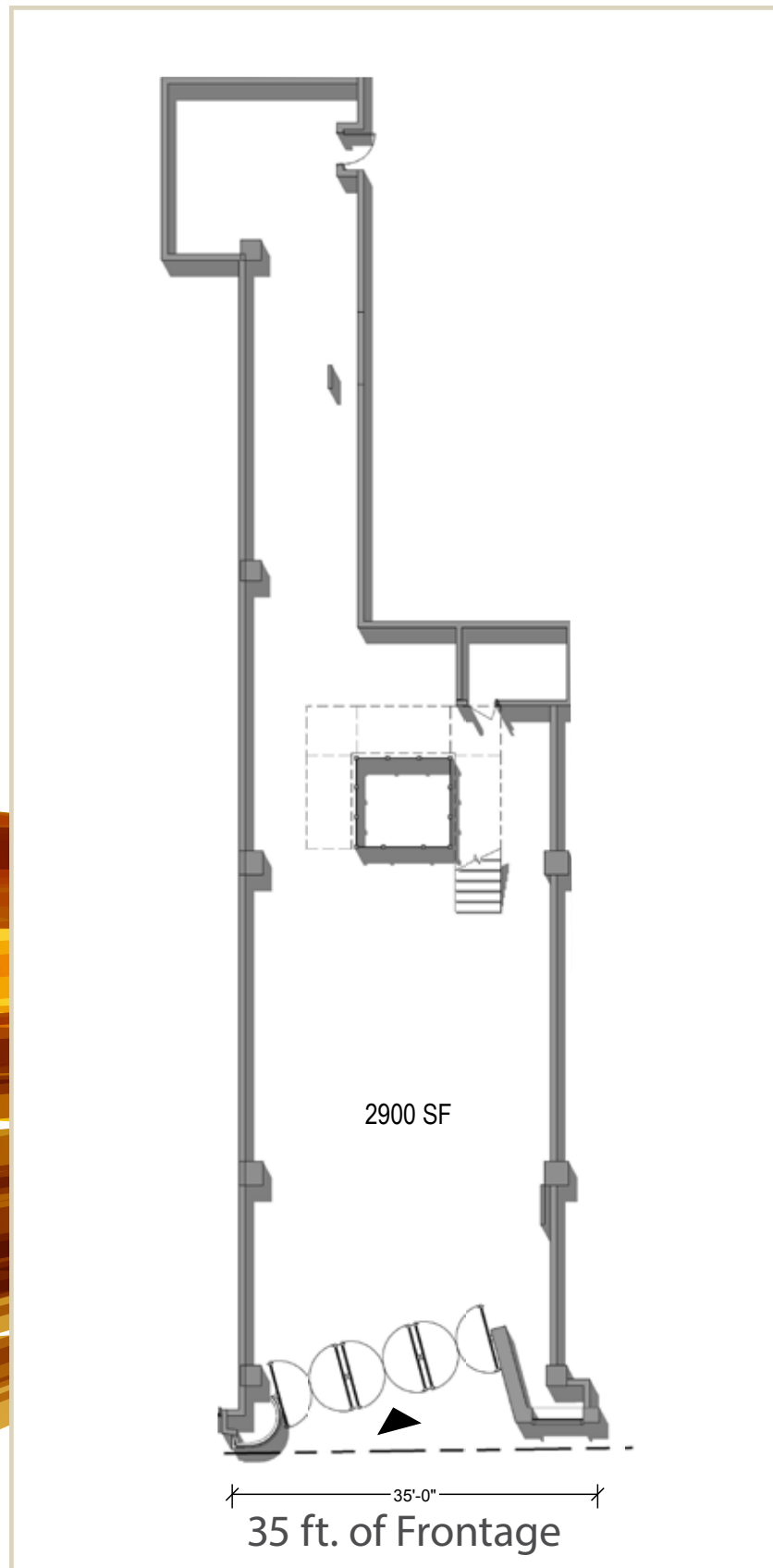
OPTION A | 8,100 sq. ft.



OPTION B | 5,200 sq. ft.



OPTION C | 2,900 sq. ft.





RETAIL



100 *Bloor Street West*

Floor plans, CAD Drawings, interior photos, virtual tour
and more is available at:

100BloorWestRetail.com

TORONTO

Arlin Markowitz*
Senior Vice President
CBRE Limited

416.815.2374
arlin.markowitz@cbre.com

*sales representative

NEW YORK

Gene P. Spiegelman
Vice Chairman
Cushman & Wakefield

212.841.5037
gene.spiegelman@cushwake.com

This disclaimer shall apply to CBRE Limited, Real Estate Brokerage, and to all other divisions of the Corporation; to include all employees and independent contractors ("CBRE"). The information set out herein, including, without limitation, any projections, images, opinions, assumptions and estimates obtained from third parties (the "Information") has not been verified by CBRE, and CBRE does not represent, warrant or guarantee the accuracy, correctness and completeness of the Information. CBRE does not accept or assume any responsibility or liability, direct or consequential, for the Information or the recipient's reliance upon the Information. The recipient of the Information should take such steps as the recipient may deem necessary to verify the Information prior to placing any reliance upon the Information. The Information may change and any property described in the Information may be withdrawn from the market at any time without notice or obligation to the recipient from CBRE. CBRE and the CBRE logo are the service marks of CBRE Limited and/or its affiliated or related companies in other countries. All other marks displayed on this document are the property of their respective owners. All Rights Reserved.

CBRE

 **CUSHMAN &
WAKEFIELD**